

NON WATER BASED BALANCING SPRAY MIST

INCA
COSMETICS

HERO INGREDIENTS



BIO BALANCE MIST RD-APSEO2

FRESHNESS in one touch



BIO BALANCE MIST is a skincare product that comes in the form of a light refreshing mist, designed to moisturize, protect and soothe the skin. Its powerful moisturizing and protective properties strengthen the skin barrier, preventing water loss and protecting the skin from environmental damage such as pollution, sun exposure and stress.

This product is ideal to be used during the day, especially in dry environments or in case of dehydrated skin, and it can be sprayed directly on the face even over makeup, without leaving residues or weighing.

TECHNICAL INFORMATION

- **UPCYCLING WATER FROM LEMON** rich in trace elements , which has high antioxidant action, capable of counteracting the free radicals action. It also performs an emollient and hydrated action, to give the skin an energy burst
- **AN ACTIVE INGREDIENT** that creates a protective shield that prevents the entry of harmful agents such as dust, pollution, irritants and UV radiations. It also protects cells from oxidative damage, which is a major cause of skin aging and wrinkling

FEATURES&PERFORMANCES

- | | |
|---------------------|---------------------|
| ▪ Refreshing effect | ▪ Anti pollution |
| ▪ Fine mist spray | ▪ Nourishing effect |
| ▪ Versatile use | ▪ Anti-ox* effect |

* Claim to be tested

WHY YOU WILL LOVE IT

Spray the mist on your face at close range whenever you feel dry or stressed skin. Perfect for a quick application in the office, on the go or for instant hydration after sun exposure.

This product profile sheet is belonging to INCA cosmetics, as well as the intellectual property of the formulation. For internal use only.

PRESENTED PACKAGING

Glass spray pump

- ✓ **VEGAN**
- ✓ **OK FDA**
- ✓ **OK CHINA**
- ✓ **OK SEPHORA**
- ✓ **93% of NOI**





HYALU MIST RD-APSEO3

FRESHNESS in one touch



A freshness explosion and well-being for your skin! Our HYALU MIST combines the power of hyaluronic acid with emollient and revitalizing action with the one of red orange active water rich in antioxidants and vitamins.

Spray on face, neck and body whenever you want a boost of freshness and hydration. Perfect in the morning to awaken the skin, during the day for an energizing effect or in the evening for a touch of comfort before sleep.

TECHNICAL INFORMATION

- **UPCYCLING WATER FROM RED ORANGE** rich in trace elements, which has high antioxidant action, capable of counteracting the free radicals action. It also performs an emollient and hydrated action, to give the skin an energy burst
- **HYALURONIC ACID** low molecular weight for a deep penetration and a moisturizing and anti aging effect

FEATURES&PERFORMANCES

- | | |
|--------------------|---------------------|
| ▪ Light texture | ▪ Emollient |
| ▪ Impalpable touch | ▪ Nourishing effect |
| ▪ Fresh feeling | ▪ Rapid absorption |

WHY YOU WILL LOVE IT

Perfect for giving relief to skin stressed by external factors such as sun, wind and pollution..

This product profile sheet is belonging to INCA cosmetics, as well as the intellectual property of the formulation. For internal use only.

PRESENTED PACKAGING

Glass spray pump

- ✓ **VEGAN**
- ✓ **OK FDA**
- ✓ **OK CHINA**
- ✓ **OK SEPHORA**
- ✓ **94% of NOI**



NON WATER BASED STICK



LUMILIFT DAY STICK

RD-KSEQ01

SKIN BOOSTER on the go



An innovative, ultra-sensorial texture in a convenient stick format, designed for effortless application anytime, anywhere. Infused with powerful active ingredients, it smooths, brightens, and deeply hydrates the skin, enhancing its natural radiance while providing long-lasting nourishment.

Its lightweight formula evens out the complexion, leaving a silky-smooth finish with no sticky residue. The fast-absorbing texture ensures instant comfort, making it perfect for a fresh, revitalized look throughout the day.

More than just skincare, this multi-functional stick delivers an energy boost to the skin, restoring vitality and glow in a single swipe.

TECHNICAL INFORMATION

- **UPCYCLING WATER FROM CLEMENTINE**, rich in elements trace, which has high antioxidant action, capable of counteracting the free radicals action. It also performs an emollient and hydrated action, to give the skin an energy burst.
- **-HYALURONIC ACID**, improves skin aspect with an immediate lifting effect. Skin looks smooth, healthy, hydrated and re-structured.
- **CAFFEINE**, helps promote blood circulation: caffeine helps reduce puffiness and dark circles under the eyes, giving the skin a more toned appearance.
- **COBIOLIFT**, it has an immediate tightening and anti-wrinkle effect. Its lifting action guarantees an immediate improvement in the appearance of the skin, protecting it from environmental stress and pollution.

FEATURES&PERFORMANCES

- | | |
|----------------------|-----------------------|
| ▪ Quick dry texture | ▪ Anti-ox* Effect |
| ▪ Fresh texture | ▪ Nourishing effect |
| ▪ Nourishing texture | ▪ Replenishing effect |

* Claim to be tested

WHY YOU WILL LOVE IT

The perfect skincare essential for those who seek instant results, lasting hydration, and a firmer, more lifted complexion—anytime, anywhere!

This product profile sheet is belonging to INCA cosmetics, as well as the intellectual property of the formulation. For internal use only.

PRESENTED PACKAGING

Backfilled stick

- ✓ VEGAN
- ✓ OK FDA
- ✓ OK CHINA
- ✓ OK SEPHORA



WATER BASE STICK

INCA
COSMETICS

HERO INGREDIENTS



OVERNIGHT BOOST STICK

RD-KSEQ02



NOURISHING recharge

This face & Eye **OVERNIGHT BOOST STICK** is the best beauty ally to restore your skin overnight. Its lightweight and silky texture glides effortlessly onto the skin, delivering an intense nourishing and repairing effect. It deeply nourishes and refreshes the delicate under-eye area, helping to reduce puffiness and signs of fatigue. Its smoothing formula visibly minimizes fine lines and small imperfections, enhancing the skin's natural radiance for a youthful, well-rested appearance. Perfect for overnight use, this primer keeps the skin soft, plumped, and luminous preparing it to be restored overnight.

TECHNICAL INFORMATION

- **HYALURONIC ACID** known for its exceptional hydrating and plumping properties, it provides a subtle radiant glow without feeling greasy or sticky, ensuring a fresh and comfortable application.
- **VITAMIN E**, it helps protect cell membranes from oxidative stress, preventing premature aging caused by environmental aggressors. It also promotes cell renewal,
- **CARROT OIL** A nourishing elixir rich in beta-carotene and antioxidants, suitable for dry and mature skin. It deeply conditions, enhances the skin's radiance luminous complexion with a natural glow.



PRESENTED PACKAGING

PP Backfilled stick

- ✓ **VEGAN**
- ✓ **OK FDA**
- ✓ **OK CHINA**
- ✓ **OK SEPHORA**
- ✓ **NO SILICONES**
- ✓ **94% of NOI**

FEATURES&PERFORMANCES

- | | |
|-----------------------|--------------------|
| ▪ Instant fresh touch | ▪ Anti-ox* Effect |
| ▪ Nourishing texture | ▪ Radiance effect |
| ▪ Rich and dry touch | ▪ Restoring effect |

* Claim to be tested

WHY YOU WILL LOVE IT

Perfect for all skin types, this night stick is an essential step in your evening skincare ritual, delivering long-lasting hydration and restoration in one simple swipe.

This product profile sheet is belonging to INCA cosmetics, as well as the intellectual property of the formulation. For internal use only.

NOURISHING GLOW SERUM



INCA
COSMETICS

HERO INGREDIENTS



DEW TO VELVET ELIXIR

RD-SFEQO30IWPAC



GLOW like never before

Illuminate and treat your skin with this ultra-light, liquid **DEW TO VELVET ELIXIR** designed to enhance your natural glow while delivering deep nourishment. Its silky formula is infused with functional active ingredients that instantly refresh and revitalize your complexion.

Micro-spheres of light create a radiant, ultra-natural luminosity, seamlessly blending into the skin for a second-skin effect. Perfect as all over the cheekbones, brow bone, and high points of the face, this highlighter adds a touch of glam without looking heavy or overdone.

TECHNICAL INFORMATION

- **HYALURONIC ACID** specific fast-track moisturizer, derived from a stable oligomer of hyaluronic acid, with an extremely low molecular weight
- **CERAMIDES**, are lipids naturally present in our skin, forming an essential part known as the skin barrier. This barrier acts as a protective shield against external damage, such as pollution, UV rays and drying, keeping the skin hydrated and healthy.



PRESENTED PACKAGING

Dropper

FEATURES&PERFORMANCES

- | | |
|------------------------|-----------------------|
| ▪ Transforming texture | ▪ Anti-ox* Effect |
| ▪ Precious touch | ▪ Moisturizing effect |
| ▪ Moisturizing texture | ▪ Skin repair effect |
| ▪ Rapid absorption | |

* Claim to be tested

WHY YOU WILL LOVE IT

Unveil your skin's natural glow with this daily illuminating serum, designed to deliver deep hydration, barrier repair, and long-lasting radiance in a single step.

This product profile sheet is belonging to INCA cosmetics, as well as the intellectual property of the formulation. For internal use only.

- ✓ VEGAN
- ✓ OK FDA
- ✓ OK CHINA
- ✓ OK SEPHORA
- ✓ NO SILICONES
- ✓ 97% of NOI

BLURRING PRIMER

INCA
COSMETICS

RETROFUTURISM



FANTASTICK BLURRING PRIMER

RD-ASA00200TNAC

SKIN perfector



FANTASTICK Eyes and Lips primer with a blur finish is an ultra-powerful face base designed to optimize the hold and intensity of the make-up on eyelids and lips. Thanks to its innovative formula, it combines volatile silicones and a selection of emollient oils to ensure a light and silky feel, favoring a uniform application without streaks. Its soft and velvety texture creates a soft-focus effect, visibly minimizing pores, and fine lines while the presence of low particle size texturing powders ensures a smooth and long-lasting finish. Enriched with moisturizing and film-forming active ingredients, this primer improves the adhesion of the make-up, avoiding smudging and prolonging its duration.



TECHNICAL INFORMATION

- **HYALURONIC ACID FILLING SPHERES** , light and ultra-regenerating, act as real natural "fillers", releasing deep and volumizing hydration for an immediate effect of smooth and smooth skin, it is a multi-functional active suitable for treatment in the area of the lips/ lip contour but also in the eye area.

PRESENTED PACKAGING

Backfilled stick

FEATURES&PERFORMANCES

- | | |
|-----------------------|-----------------------------|
| ▪ Instant blur effect | ▪ Anti-age* Effect |
| ▪ Precious touch | ▪ Nourishing effect |
| ▪ Nourishing texture | ▪ Anti-imperfections effect |

* Claim to be tested

WHY YOU WILL LOVE IT

It can be used as a pre-makeup base, improving the hold and durability of the make-up, or applied throughout the day for an instant mattifying effect. An indispensable ally for matted, even and naturally perfected skin.

- ✓ **VEGAN**
- ✓ **OK FDA**
- ✓ **OK CHINA**
- ✓ **OK SEPHORA**

This product profile sheet is belonging to INCA cosmetics, as well as the intellectual property of the formulation. For internal use only.

ANHYDROUS MATTIFYING PRIMER



PRESENTED PACKAGING

Diameter 59 godet

- ✓ VEGAN
- ✓ OK FDA
- ✓ OK CHINA

INCA
COSMETICS

HERO INGREDIENTS



ZERO SHINE PRIME & FIX RD-PFA0020IGMAC

CASHMERE skin



ZERO SHINE prime & fix has been formulated to ensure an immediate mattifying effect. Ideal for preparing the skin to make-up, it helps improve and even out the skin texture, minimizing the visibility of pores and imperfections. Thanks to its innovative formula, it offers a feeling of lightness and a velvety finish, perfect for prolonging the duration of makeup and keep the skin opaque all day. It can be applied before makeup as a base or during the day it can be gently buffered to reduce the oily skin effect

TECHNICAL INFORMATION

- A **NATURAL EMOLLIENT** gives softness and elasticity to the skin, leaving it incredibly silky and velvety, without weighing .
- **AN ULTRA FINE MINERAL POWDER** absorbs sebum excess , giving a mattifying effect and minimising pores for smooth, even skin.
- A **CUTTING-EDGE ACTIVE INGREDIENT**, works on three fronts: regulates the production of sebum, visibly reduces pores and counteracts inflammation, for a more balanced and even complexion.
- **ALOE extract*** it helps calm and moisturize, leaving the skin pleasantly soft and relaxed. *mktng%

FEATURES&PERFORMANCES

- | | |
|---------------------|----------------------|
| ▪ Mattifying effect | ▪ Sebum regulation |
| ▪ Pleasant touch | ▪ Nourishing effect |
| ▪ Powdery texture | ▪ Anti-imperfections |

WHY YOU WILL LOVE IT

Suitable for every skin type and tone, this universal powder is perfect for both men and women. It can also be used on its own for those who prefer a fresh, bare-faced appearance.

This product profile sheet is belonging to INCA cosmetics, as well as the intellectual property of the formulation. For internal use only.

ANHYDROUS MATTE FOUNDATION



PRESENTED PACKAGING

LDPE/HDPE Tube

- ✓ VEGAN
- ✓ OK FDA
- ✓ OK CHINA
- ✓ OK SEPHORA

INCA
COSMETICS

RETROFUTURISM



BLUR COUTURE FDT RD-FFA002



MATTE VELVET skin

An anhydrous foundation with innovative cream-to-powder texture, which transforms from a soft cream into an impalpable powder, blending perfectly with the skin. Its low to medium modifiable coverage uniformizes complexion without weighing, giving a natural and smooth effect. Thanks to its dry and mattifying finish, it helps control excess sebum, minimizing shiny areas and leaving the skin perfectly balanced. Perfect to be used stand alone or as base to prepare the skin to make up

TECHNICAL INFORMATION

- **MIX OF VOLATILE OILS AND EMOLLIENTS** allow to have a soft and silky texture in application, ensure a quick drying and greater of the product allowing to obtain a light and natural finishhold
- **AN INNOVATIVE POWDER** allows greater light diffusion to achieve a matte and soft focus effect that minimizes the appearance of small skin imperfections
- **A SILICONE CROSSPOLYMER** contributes to a flawless finish of the foundation. Thanks to its unique texture, it creates an incredibly silky texture and even.

FEATURES&PERFORMANCES

- | | |
|---------------------------|-------------------|
| ▪ Mattifying effect | ▪ Sebum regulator |
| ▪ Precious touch | ▪ Long wearing |
| ▪ Cream to powder texture | ▪ Quick drying |

WHY YOU WILL LOVE IT

Ideal for those who want a fresh and light look with a touch of perfection, without sacrificing the comfort and convenience of a simple and fast application.

This product profile sheet is belonging to INCA cosmetics, as well as the intellectual property of the formulation. For internal use only.

SPF 30
NATURAL FINISH
FOUNDATION

INCA
COSMETICS



SKIN PROTECTOR FDT
RD-FFE013



SKIN ally foundation



A high-performance foundation with SPF 30, which offers buildable medium-high coverage, while ensuring a feeling of lightness and comfort on the skin. Its silky texture is ultra-pleasant to the touch and spreads very easily, blending perfectly with the complexion for a natural and uniform effect.

Enriched with the latest generation of volatile oils and resins, it ensures flawless hold all day long, resisting smudges and shine. Its innovative formula is designed to minimize imperfections, smooth the skin and give a luminous and flawless finish. Formula enriched with ceramides, peptides and hyaluronic acid, ingredients known for their moisturizing, plumping and strengthening properties

TECHNICAL INFORMATION

- **CERAMIDES** help restore the skin barrier
- **PEPTIDES** promote skin firmness and elasticity
- **HYALURONIC ACID** guarantees intense hydration, leaving the skin soft and smooth

FEATURES&PERFORMANCES

- | | |
|------------------|-----------------|
| ▪ Natural finish | ▪ SPF 30 tested |
| ▪ Precious touch | ▪ Long wearing |
| ▪ Creamy texture | ▪ Quick drying |

WHY YOU WILL LOVE IT

Perfetto per chi desidera un incarnato radioso, uniforme e protetto dai raggi solari in un solo gesto!

This product profile sheet is belonging to INCA cosmetics, as well as the intellectual property of the formulation. For internal use only.

**PRESENTED
PACKAGING**

Glass pump

- ✓ **VEGAN**
- ✓ **OK FDA**
- ✓ **OK SEPHORA**



FLUID CONCEALER NATURAL FINISH

INCA
COSMETICS



VELVET TOUCH CONCEALER RD-CFE001



SOFT touch and coverage



Concealer with a light and melting texture, which guarantees a natural-matte finish and buildable coverage, perfect for impeccably correcting dark circles and imperfections without weighing it down. Its advanced formula is enriched with a special emulsifier, designed to intensely hydrate the skin and strengthen the skin barrier, preventing dehydration and improving comfort throughout the day. Thanks to its high blendability and long wearing effect, this concealer is the perfect ally for an even, luminous and flawless complexion that is always natural and fresh.

TECHNICAL INFORMATION

- **A blend of natural jojoba, mimosa and sunflower waxes**, which gives the product a creamy and enveloping texture, ensuring a soft and uniform application.
- **HYALURONIC ACID***with different molecular weights for deep and long-lasting hydration, which helps plump and smooth the skin.
- **An active ingredient of natural origin*** with an immediate and long-term tensor effect, for a firmer, more relaxed and visibly younger skin from the first application *mktng %



PRESENTED PACKAGING

Glass pump

- ✓ **VEGAN**
- ✓ **OK FDA**
- ✓ **OK CHINA**
- ✓ **OK SEPHORA**

FEATURES&PERFORMANCES

- | | |
|------------------------|-------------------------|
| ▪ Natural matte finish | ▪ Nourishing properties |
| ▪ Precious touch | ▪ Long wearing |
| ▪ Creamy texture | ▪ Comfortable wearing |

WHY YOU WILL LOVE IT

An exclusive mix of ingredients that combines comfort, care and performance, for a flawless result and a radiant and smooth looking skin.

This product profile sheet is belonging to INCA cosmetics, as well as the intellectual property of the formulation. For internal use only.

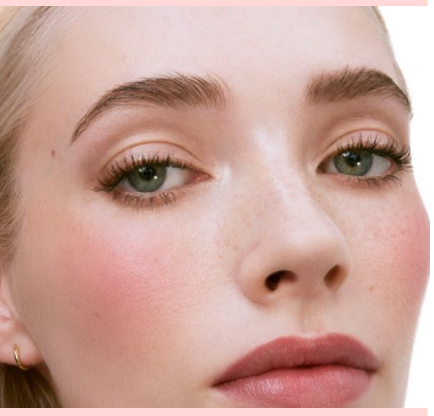


LIQUID BLUSH
NATURAL DEWY
FINISH

DEW YOU BLUSH?
RD-AFG004



LIGHTWEIGHT transforming texture



A dewy to natural liquid blush with a light and impalpable texture, which blends perfectly with the skin to give a radiant and natural glow, without weighing it down. Its long-wearing formula ensures a fresh and luminous color that lasts all day, adapting perfectly to the complexion.

Easy to blend with brush, sponge or fingers, it allows you to build the desired intensity, from a delicate veil to a more intense effect. Available in two exclusive finishes - matte for a sophisticated and velvety effect, slightly pearlescent for a fresh and natural glow. Easy to apply and blend, this liquid blush leaves you feeling extremely light, like a second skin, giving your face a healthy, youthful and naturally radiant appearance.

TECHNICAL INFORMATION

- AN EXCLUSIVE SOFT TOUCH POLYMER improves the glide of the product on the skin. and also optimizes the uniform dispersion of the pigment, enhancing the intensity of the color and ensuring a homogeneous and flawless result.
- Thanks to the presence of **EMOLLIENT OILS**, the formula envelops the skin in a sensation of extreme softness
- The **TEXTURIZING POWDERS** help to perfect the finish, making it smooth and refined.



**PRESENTED
PACKAGING**

Tube with sponge applicator

- ✓ **VEGAN**
- ✓ **OK FDA**
- ✓ **OK CHINA**
- ✓ **OK SEPHORA**

FEATURES&PERFORMANCES

- | | |
|---|---|
| <ul style="list-style-type: none"> ▪ Natural dewy finish ▪ Lightweight texture ▪ Easy to use | <ul style="list-style-type: none"> ▪ Emollient ▪ Easy to blend ▪ Comfortable wearing |
|---|---|

WHY YOU WILL LOVE IT

Second-skin effect blush, to create sophisticated and elegant looks, for a naturally tinted skin effect

BEAUTY BALM STICK & FOUNDCEALER



INCA
COSMETICS

RETROFUTURISM



THE PERFECT DUO RD-FSA001-RD-FFE008



2 in 1 perfection

The PERFECT DUO is a two in one product in which one size is a luxurious BB formula in stick, blend of nourishing oils and creamy waxes, creating an ultra-sensory texture that glides effortlessly onto the skin. Its lightweight, buildable coverage adapts seamlessly, thanks to microencapsulated pigments that burst upon contact, releasing a delicate veil of color for a naturally enhanced complexion. On the other side, A soft and sensorial foundcealer with a silky, silicone-like touch, offering medium to high, buildable coverage that seamlessly melts into the skin without feeling heavy.. Each product is perfect to be used stand alone or in combination to create a base (BB STICK) and adding more coverage and a sensual look (foundcealer) to the make up

TECHNICAL INFORMATION

STICK FORMULA:

TEXTURIZING POWDERS give a velvety finish and a soft focus effect for a perfect makeup no make up

MICROENCAPSULATED PIGMENTS ensure a light and gentle color release

VIAL FORMULA:

VOLATILE OILS to increase long lasting effect

SODIUM HYALURONATE to increase moisturizing effect



PRESENTED PACKAGING

Double ended
STICK+ PET VIAL

FSA001:

- ✓ VEGAN
- ✓ OK FDA
- ✓ OK CHINA
- ✓ OK SEPHORA

FFE008:

- ✓ VEGAN
- ✓ OK FDA
- ✓ OK CHINA

FEATURES&PERFORMANCES

- Adapting color
- Medium buildable coverage
- Anti-age* Effect
- Nourishing effect

* Claim to be tested

WHY YOU WILL LOVE IT

This dual-purpose product allows you to achieve the maximum of personalization: perfect your skin with BB cream, or choose the full coverage of the foundation for a refined matte effect. Ideal for those who want practicality and versatility in one product!

This product profile sheet is belonging to INCA cosmetics, as well as the intellectual property of the formulation. For internal use only.

ANHYDROUS HIGHLIGHTER & CONTOURING



INCA
COSMETICS

RETROFUTURISM



DOUBLE GLAM DUO RD-KSA001

LIGHTS & SHADOW all in one



Enhance your features with **DOUBLE GLAM DUO**

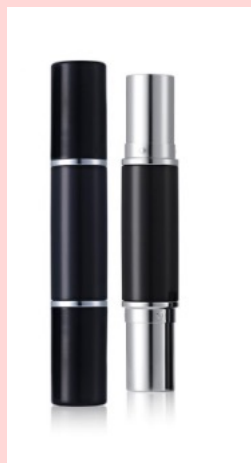
The perfect product, designed to sculpt and illuminate the face with a natural and harmonious effect.

On the one hand, the highlighter gives a touch of strategic light, thanks to its soft and nuanced texture that blends with the skin for a radiant and sophisticated glow. Perfect for enhancing cheekbones, cupid's bow and bridge of the nose, giving a luminous effect without excesses.

On the other hand, the contouring with its matt finish sculpts and defines the features with a natural and light shade. The silky formula, easily fade, allows you to modulate the intensity, adapting to each complexion for a tailor-made result.

TECHNICAL INFORMATION

- **EMOLLIENT OILS** with high brightness give a radiant and smooth finish, enhancing the natural luminosity of the skin without weighing it down.
- The **GELLING AGENTS** present in the formula guarantee a creamy and thin texture, perfectly dimmable and easily modulated, for a tailor-made result that adapts to every need.
- **ULTRA FILLING SPHERES*** for a nourishing and emollient Effect
* marketing %



PRESENTED PACKAGING

Double ended
STICK

- ✓ **VEGAN**
- ✓ **OK FDA**
- ✓ **OK CHINA**
- ✓ **OK SEPHORA**

FEATURES&PERFORMANCES

- | | |
|-------------------------|------------------|
| ▪ Creamy texture | ▪ Long wearing |
| ▪ Easy to blend formula | ▪ Glamour effect |

WHY YOU WILL LOVE IT

Apply directly on the skin and rub with your fingers, a sponge or brush for a personalized look and always flawless. A must-have for those who want a three-dimensional, sophisticated and natural make-up in just a few simple gestures!

This product profile sheet is belonging to INCA cosmetics, as well as the intellectual property of the formulation. For internal use only.

PEARLY
LOOSE
POWDER



VELOUR GLOW
RD-PVPE01

SHIMMER VELVET



Discover the magic of a free ultra-pearly **VELOUR GLOW** loose powder, designed to give a velvety and bright finish, with a touch of sophisticated light, never excessive. Its impalpable texture blends perfectly with the skin, giving an effect that sublimates the complexion.

Enriched with a 100% natural emollient, this powder offers absolute comfort, keeping the skin hydrated and silky all day. The presence of a texturizing powder it ensures uniform light diffusion and flawless application, without weighing down.

Perfect for illuminating areas of the face, this loose powder is the ideal ally for a radiant and natural beauty.

TECHNICAL INFORMATION

- **100% NATURAL ORIGIN EMOLLIENT** provides comfort and hydration, preventing skin dryness
- **ADVANCED TEXTURIZING POWDER** Improves adhesion to the skin and ensures optimal
- **FINE PEARLS** reflect light without emphasizing the skin grain



PRESENTED
PACKAGING

JAR

- ✓ **VEGAN**
- ✓ **OK FDA**
- ✓ **OK CHINA**
- ✓ **99% of NOI**

FEATURES&PERFORMANCES

- Buildable shimmer effect
- Velvet and creamy touch
- Anti-age* Effect
- Nourishing effect

* Claim to be tested

WHY YOU WILL LOVE IT

Suitable for all skin types, this loose powder can be used alone for a natural luminous effect or over foundation for a radiant and sophisticated hold.

This product profile sheet is belonging to INCA cosmetics, as well as the intellectual property of the formulation. For internal use only.